

PUMP ADAPTER GUIDE

Pump adapters are used to secure the pump to a variety of containers. Please use the guide below when choosing an adapter for your application.

1-1/2" Pumps 236 Series - 336 Series - 436 Series



ADPT-A01

For ACT Buttress Thread
(2-3/4")



ADPT-B01

2-5/8" Poly Drum Buttress



ADPT-B02

For CCA or Rieke Buttress
Thread (2-3/4")
Use with ADPT-S01



ADPT-P01

For 83B Closure



ADPT-S01

2" IPS Standard

2" IPS adapter screws into ACT
Buttress Thread adapter



2" IPS adapter screws into CCA or Rieke
Buttress Thread adapter

1-1/4" Pumps CF Series - CP Series - DL Series DP Series - MP Series - PP Series



ADPT-C01

For Rieke SR



ADPT-E01

For European
(Tri-Sure)



ADPT-M01

For 70mm or 3/4" thread



ADPT-R01

For Rieke Jr. or III



ADPT-SO2

2" IPS Standard



ADPT-K01

For 51 mm



ADPT-D01

For 61 mm



ADPT-F01

For 63 mm

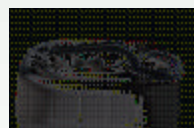
NOTE: Adapters for 51mm, 61 mm and 63 mm containers must be factory installed on the pump.

CONTAINER WRENCHES



Model: WRENCH-63

For 63 mm caps



Model: WRENCH-70

For Rieke & Hedwin 70mm



Model: WRENCH-DRUM

For 55 Gallon Drums